

How to configure a Paxton10 reader

Overview

Having a reader makes it possible to monitor and restrict access and control of a door or a device. Readers are most commonly used on doors as a method of access control, but with Paxton10 it is possible to control access of turning on/off equipment and machinery, setting or disarming intruder alarms and much more.

Each Paxton10 controller can connect 2 readers, these readers can then be assigned to any controllable device on the Paxton10 system.

Mapping a reader

Once a Paxton10 controller is bound and its Door component is mapped to an Access point, the reader(s) connected to the controller will automatically be discovered and map to the same Access point.

The screenshot shows the Paxton10 web interface. At the top, there is a search bar and user information for 'Joe Stroud'. Below this is a navigation bar with icons for 'Add to favourites', 'View events', 'View video', 'Add new', 'Delete', 'Change image', 'Control device', and 'Manage hardware'. The main content area is titled 'Devises > Lab > PM Lab - Door 1 (Slim)'. It shows a configuration table for a 'Door Connector (40015195)' which is 'Online'. The table has columns for the component name and its status. Below this, there are three 'Reader' entries, each with a 'Reader' field and a 'Manage hardware' button. The first two readers are 'Online', and the third is 'Offline'.

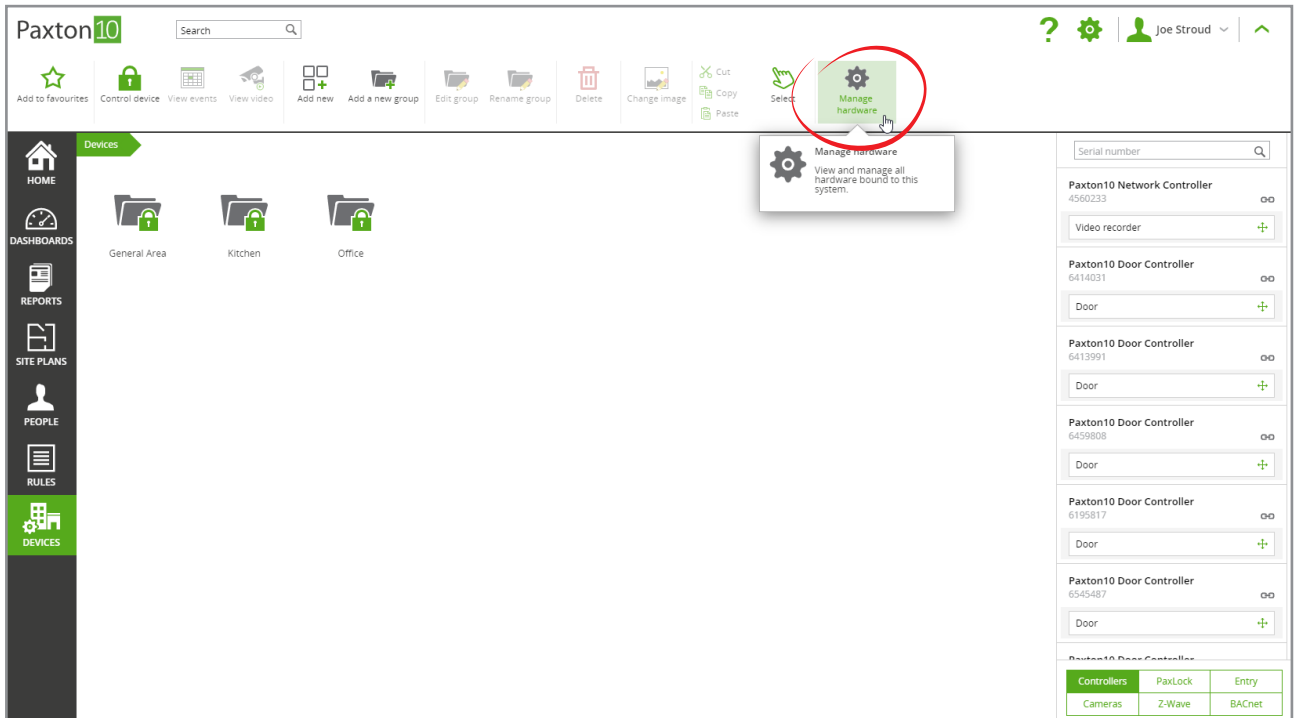
| Component | Status |
|---------------------------|------------------|
| Door Connector (40015195) | Online |
| Exit | Active |
| Contact | Active |
| PSU fail | Active |
| Lock Output | Fail closed lock |
| Relay 1 | Lock |
| Reader (6456839) | Online |
| Reader (6537872) | Offline |

To bind and map a Paxton10 controller, follow the instructions in AN0004-AE – How to add a Paxton10 controller <paxotn.info/6102>

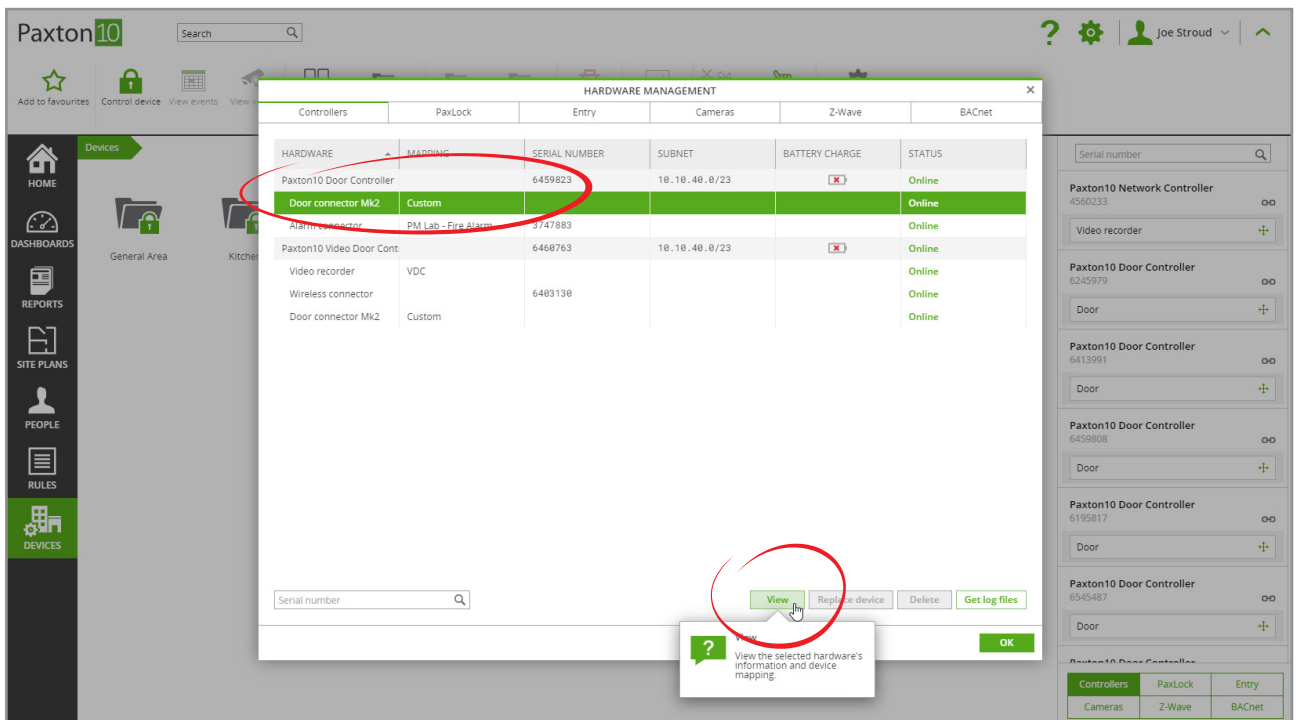
Sometimes, the reader may need to be mapped to a different device e.g. to set an intruder alarm. To map the reader to

a different device, complete the following:

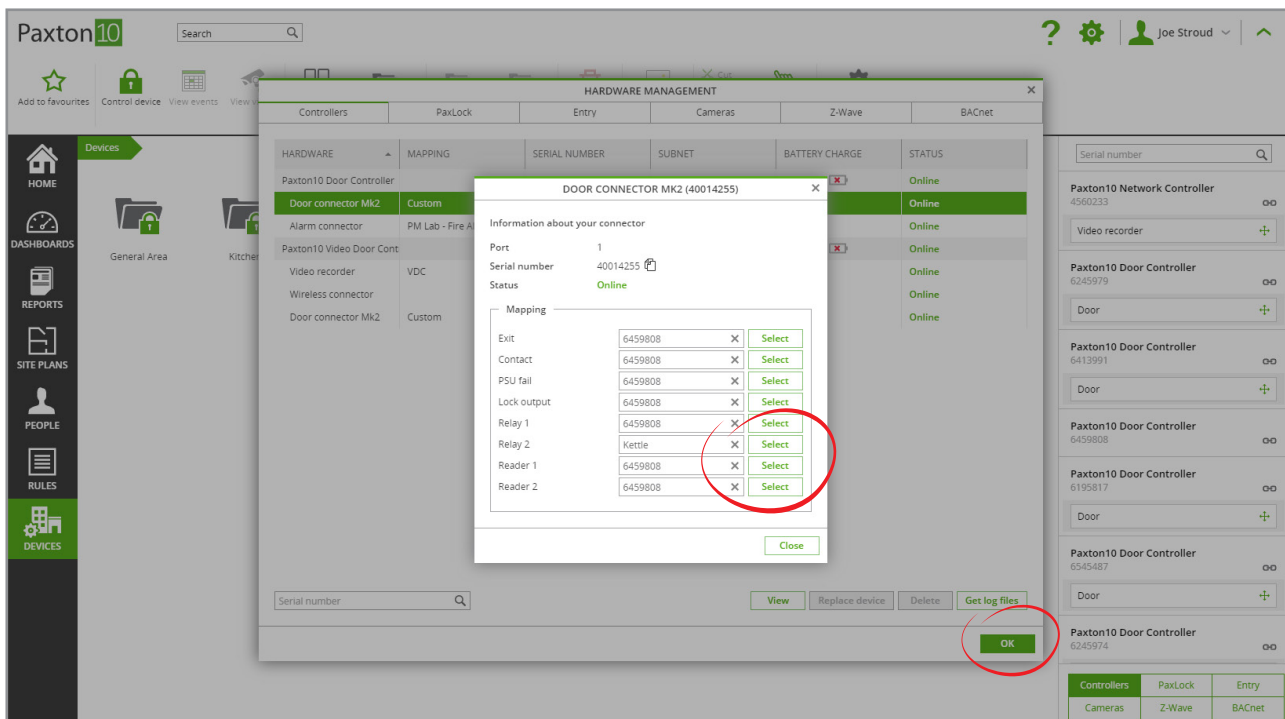
1. Ensure the Paxton10 controller is bound to the system (it must either be mapped to a device, or the 'link' icon in the Device Panel should be made green by clicking on it)
2. Click 'Manage hardware'



3. Select the 'Door' component for the controller which has with the reader attached, then click 'View'



4. Click 'Select' next to the reader, and select the device to map the reader to before clicking 'OK'



The reader will now be mapped to the device. Navigate to the mapped device to further configure how the reader behaves.

Reader configuration

Reader configuration is available in the Device, under the 'Readers' section in 'Configuration'.

- 'Sound on' – When selected, the reader will provide audible feedback for valid and invalid access.
- 'LED on' – When selected, the reader will show a white light at all times to help people locate the reader in low light conditions.
- 'Always allow valid users to exit / turn off' – When selected, any person that has permission at some point in the day to use the door or device will be able to exit through the door or turn off the device at any time of the day.

Reader operating mode

Where a Paxton10 keypad is installed, additional reader operating modes are available. The reader operating mode determines what a user must provide to the reader for their identity to be confirmed: a token, a PIN, a code, or a combination of the above.

More information on using a keypad with Paxton10 can be found in AN0042-AE – Using Keypads with Paxton10. paxton.info/6096

Bluetooth® settings

All Paxton10 readers contain Bluetooth compatibility. This allows all readers to be used with Hands free credentials (Paxton10 Hands free keyfob), as well as with Smartphones and Smart Watches (using 'Smart credentials').

Note: Paxton10 VR Reader is not suitable for mounting on metal, Paxton10 Slimline Reader and Paxton10 Keypad Reader are suitable for mounting on metal, but this could have an adverse effect on Bluetooth Communication. Please consider this when planning the installation.

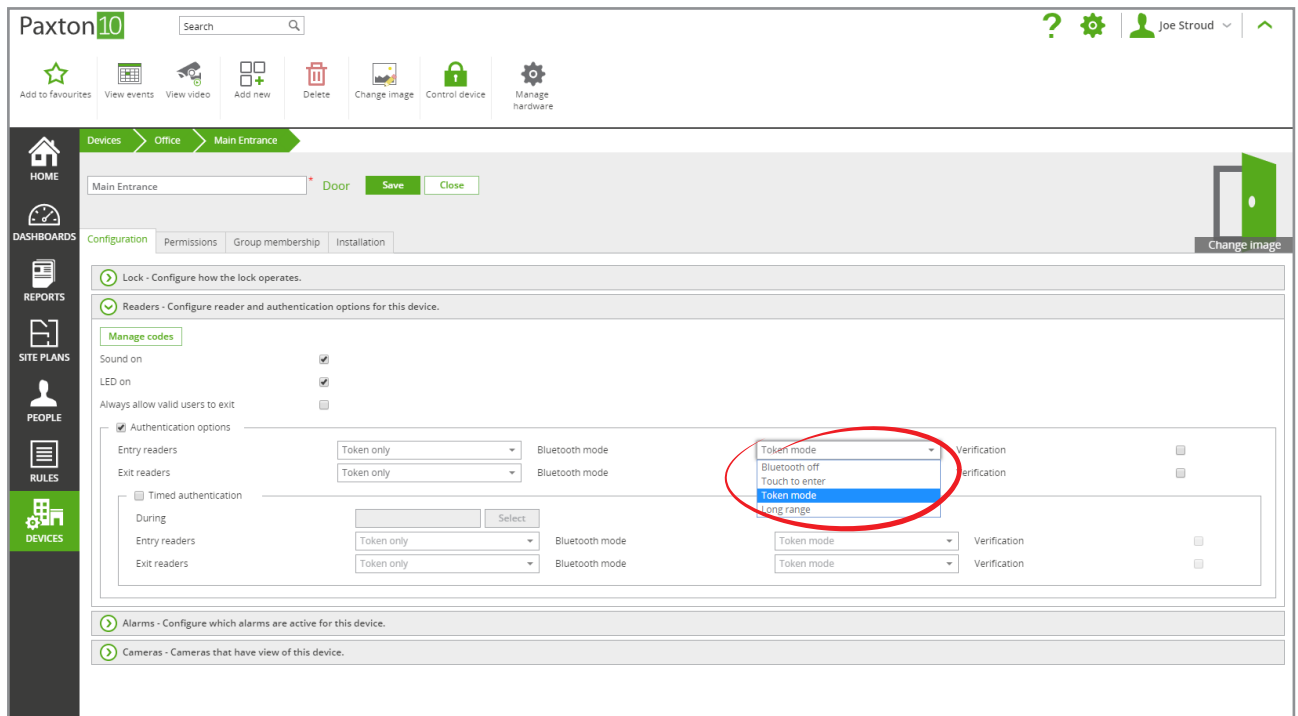
Bluetooth® mode

The Bluetooth mode of a reader determines the range that Bluetooth credentials can be read from and how they are used.

To change the Bluetooth mode, go to the 'Readers' section in the 'Configuration' tab in the device, and select the drop-down menu beside 'Bluetooth mode'.

- 'Short range' - The Smart credential or hands-free keyfob will be read when placed in close proximity to the reader.

- **‘Touch to enter’** – Touch the reader to initiate Bluetooth communication with your Hands Free Keyfob or Smart credential.
- **‘Long range’** - The reader will detect the Hands Free Keyfob or Smart credential at a longer range, for example, while you’re in your vehicle (up to 10m for a Smart credential and 15m for the Hands Free Keyfob).
- **‘Bluetooth off’** - The Smart credential will not read at all. The Hands Free Keyfob will be read when placed in close proximity to the reader.



Smart device verification

Selecting **‘Verification’** will require someone using a Smart credential to unlock their device prior to the credential being accepted. If a screen lock is not setup on the device, access will be denied.

This helps to validate the user against the credential, ensuring an intruder can’t access the building using a stolen device.

Timed authentication

You may require different methods of verification depending on the time of day. For example, to require **‘Verification’** when outside of working hours. Timed authentication allows you to do this.

1. Tick the **‘Timed authentication’** option
2. Click **‘Select’** and choose the time profile required for different operation
3. Configure the reader operating mode, Bluetooth mode, and Verification settings to apply during the selected time profile

HOME
DASHBOARDS
REPORTS
SITE PLANS
PEOPLE
RULES
DEVICES

Devices > Office > Main Entrance

Main Entrance Door Save Close

Configuration Permissions Group membership Installation

Lock - Configure how the lock operates.

Readers - Configure reader and authentication options for this device.

Manage codes

Sound on
LED on
Always allow valid users to exit

Authentication options

| | | | | | |
|--|---------------|--|------------|--------------|--------------------------|
| Entry readers | Token only | Bluetooth mode | Long range | Verification | <input type="checkbox"/> |
| Exit readers | Token only | Bluetooth mode | Long range | Verification | <input type="checkbox"/> |
| <input checked="" type="checkbox"/> Timed authentication | Working hours | <input checked="" type="button" value="Select"/> | | | |
| Entry readers | Token only | Bluetooth mode | Token mode | Verification | <input type="checkbox"/> |
| Exit readers | Token only | Bluetooth mode | Token mode | Verification | <input type="checkbox"/> |

Alarms - Configure which alarms are active for this device.

Cameras - Cameras that have view of this device.